



TRIO

Hands-Free Skype Phone

User Manual

1. Setting Up Your PC	002
2. Configuring TRIO with the TRIO Control Panel	004
3. Getting to know the TRIO	005
4. Calling	008
5. Record	009
6. FAQ	011
Package Contents and System Requirement	014
Product Warranty	015

1. Setting Up Your PC

1. Insert the **TRIO Setup CD** to your computer's CD-ROM drive. The setup window will appear as shown.



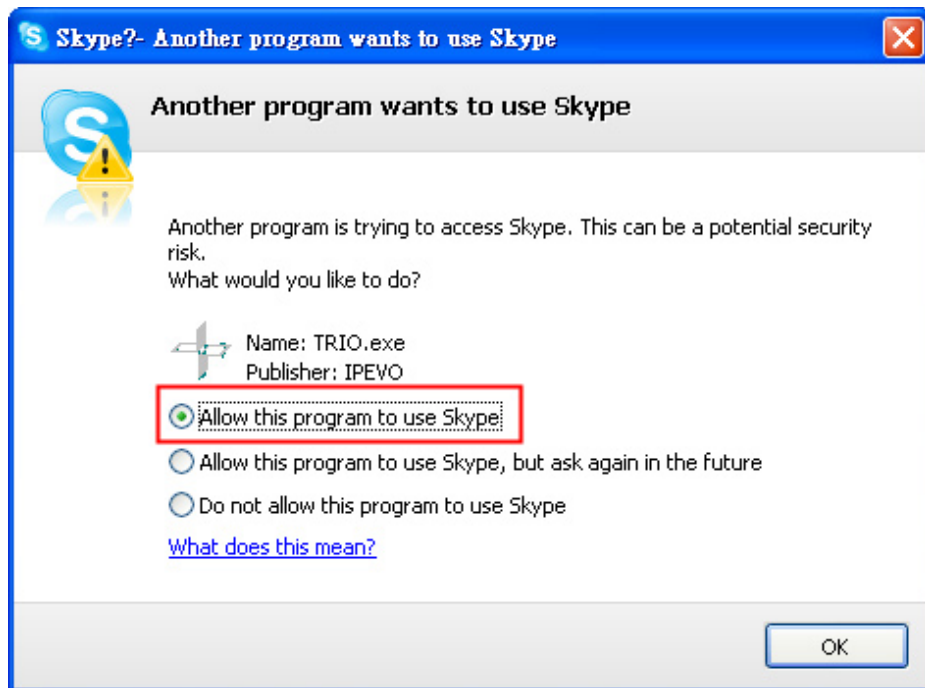
Note: If the **TRIO Setup CD** does not start automatically, go to your computer's CD-ROM directly and double click the **IPEVO.exe** file.

2. Click **Link to Skype software** to install **Skype** if it is not yet installed on the computer. An installation wizard will help you install **Skype**. The latest version of **Skype** software can also be downloaded from <http://www.skype.com/download/>

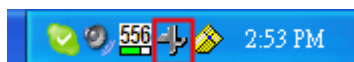
Note: Before you can use the **TRIO**, you must have **Skype** software installed on your PC. As **TRIO** depends on the **Skype** software to place calls, it will not work without **Skype**.

3. Click on **TRIO Skype Phone**. Follow the on screen instructions to install the software.

4. Connect **TRIO** to your computer's USB Port, you will be prompted that another program wants to access Skype. Select **Allow the program to use Skype** and Click **OK**.




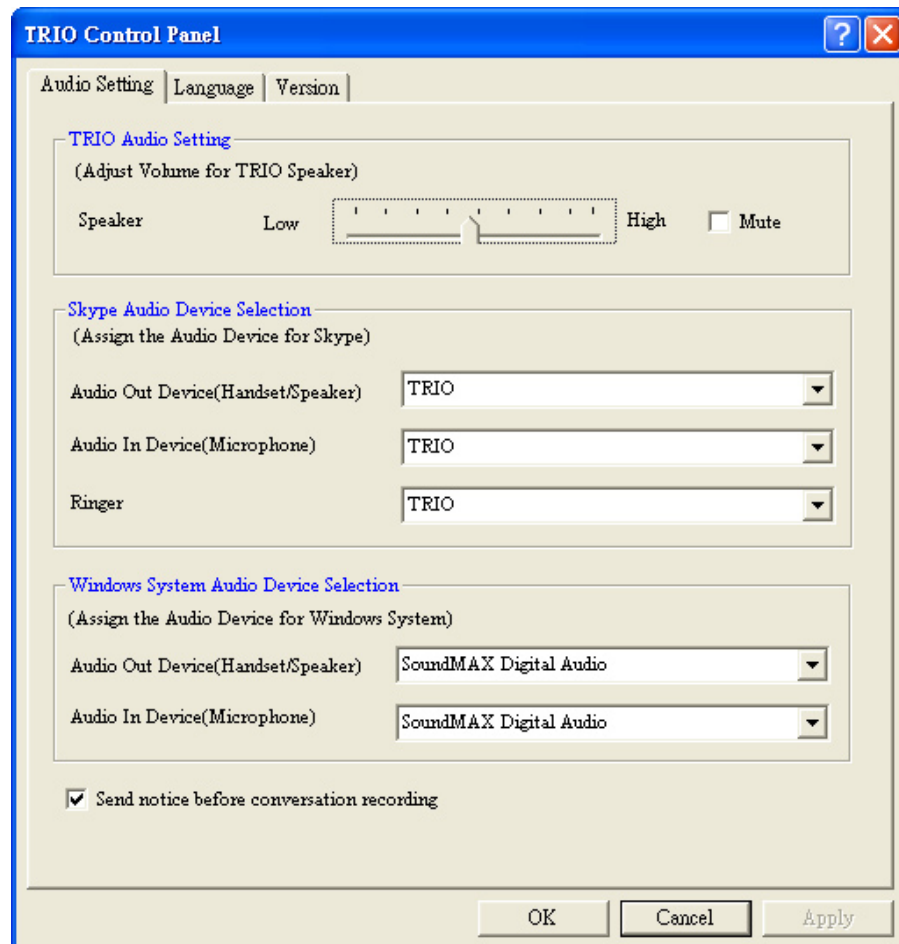
5. After successful installation of the TRIO software, a **TRIO Control Panel** icon will appear on the desktop's system tray. **TRIO Control Panel** allows you to quickly configure your **Audio Settings** and **Language** preferences.



Note: Before you can use the **TRIO**, you must activate **Skype** software on your PC. As this phone depends on the Skype software to place calls, it will not work without it.

2. Configuring TRIO with the TRIO Control Panel

1. **TRIO Control Panel** allows you to quickly configure your **Audio Settings** and **Language** preferences. Double click on the  icon to open **TRIO Control Panel**.



Note: If the **TRIO Control Panel** is not running, go to **Start/ All Programs/IPEVO/TRIO** and click on **TRIO** to start it manually

2. On the **Sound Device** tab, you will see a **sound Device for Skype** section. From the drop-down list, choose **TRIO** as the option if you want to use **TRIO** for making and receiving Skype calls
3. If you want to use your TRIO and speakers at the same time, in the **Windows Default Sound Device** Section, select your computer sound card from the drop-down list.

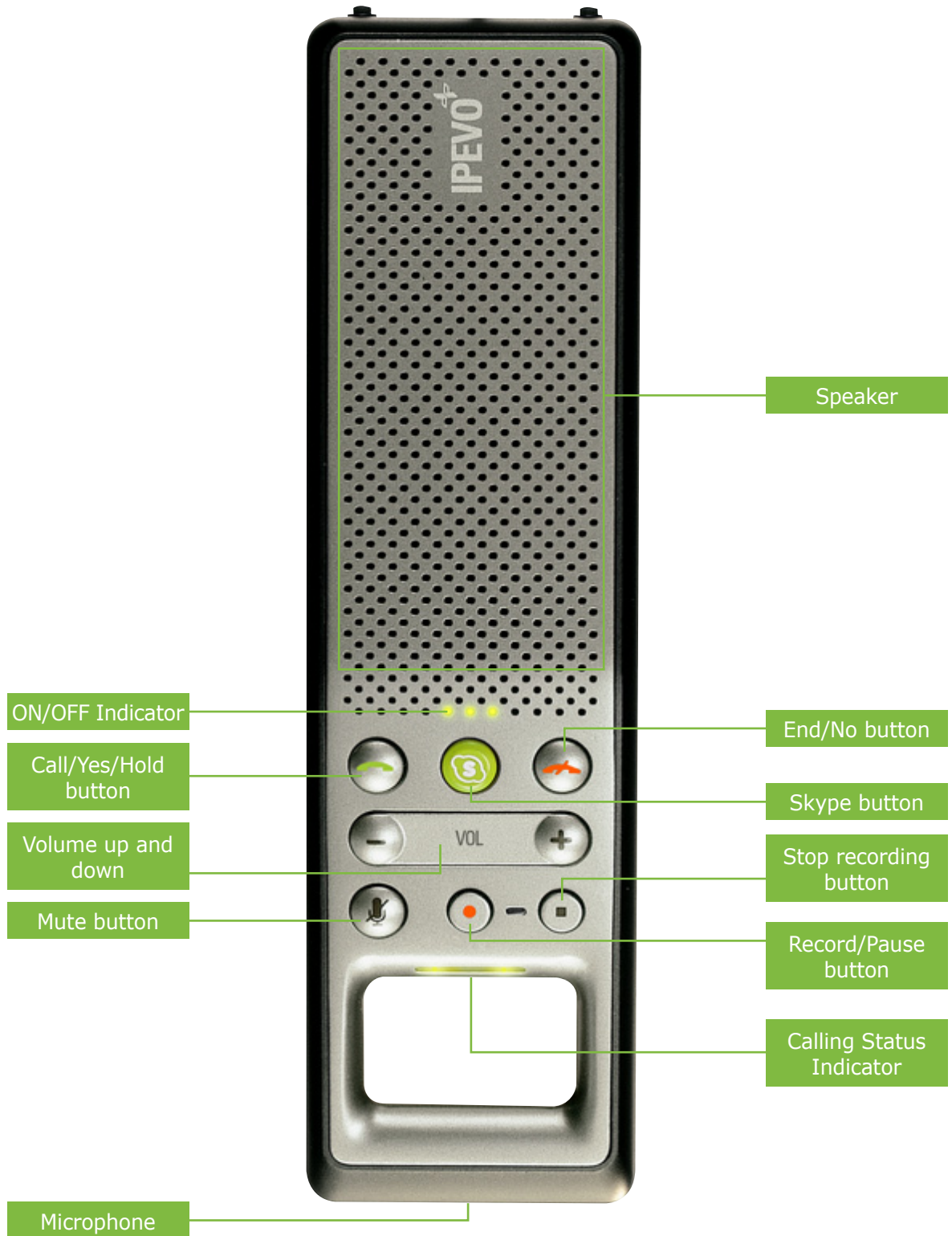
Note: If no sound can be delivered through external speakers after you connect **TRIO** to your computer, please make sure this setting is set-up properly.

3. Getting to Know the TRIO

Phone Overview

005

Getting to Know the TRIO





- (1) Speaker
- (2) ON/OFF Indicator
- (3) Skype button: Press to bring up the Skype on the PC's monitor, and press again to move between Skype's tabs.
- (4) End/No button: Press to end a call.
- (5) Stop recording button: Press to stop recording and save the audio file as WAV format.
- (6) Calling Status Indicator: Green: (On: Hang on; Off: Hang up)
Quick flash: Incoming call
Slow flash: Call out
Red: Mute
- (7) Call/Yes/Hold button: Press to answer/ make a call.
- (8) Volume up and down: Press + and - to adjust volume level.
- (9) Mute button: Press to mute the microphone.
- (10) Record/Pause button: Press to launch freeREC software and start to record your voice or record conversation during a call. Press repeatedly to pause and restart the record.
- (11) Microphone
- (12) Switch LED(Green): On: Handset mode/ Off: Speakerphone mode
- (13) Speaker Phone / Handset Switch: Slide to switch between Handset mode and Speakerphone mode.
- (14) Receiver
- (15) Microphone

4. Calling

To make a call

You can make two types of calls with Skype. The first type is calling people in your Skype Contacts. The second type is calling telephone or cellular phone numbers. Please see the chart below for reference

Two Types Of Calling Methods Through Skype		
Calling Type	PC to PC	PC to telephone or cellular phone.
Rate	Free	Rate varies by region
Skype ID	Both parties must use Skype	Receiver is not required to have Skype ID.

Pressing the **Skype Button** will take you to your Skype Contact list, select who you want to talk to and press the **Call/Yes/Hold button**. You will hear the other end ringing from your TRIO's speaker. After the call, hit the **End/No button** to terminate the call.

To answer a call

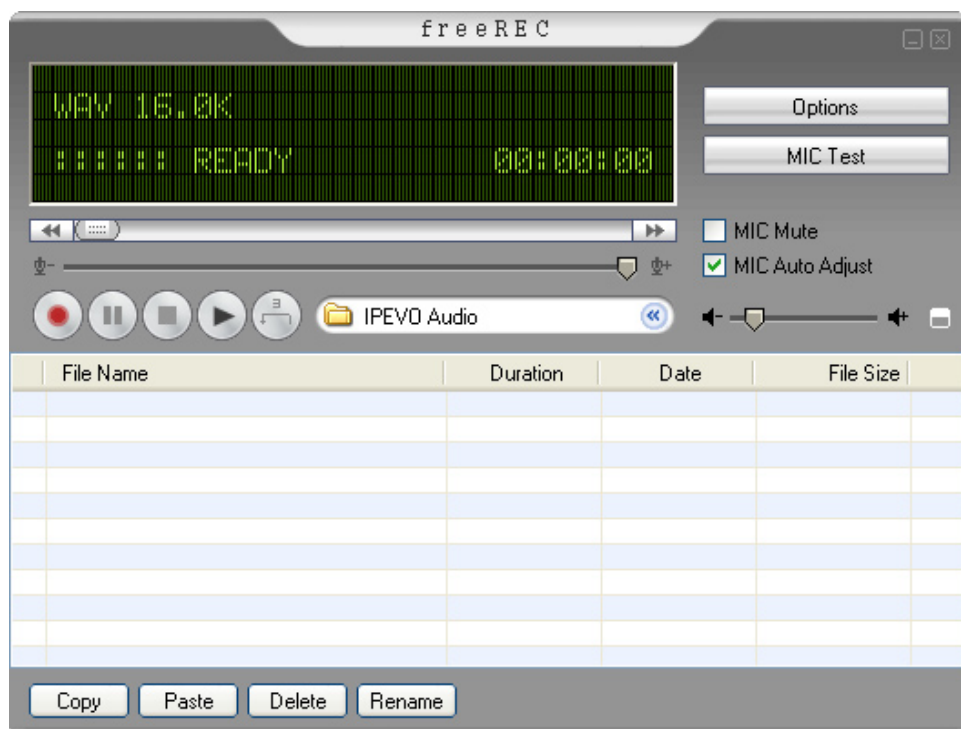
When you receive a call, press **Call/Yes/Hold** to answer, press **End/No** to reject.

5. Record

freeREC is an easy-to-use free software program that lets you record any voice and Skype calls on your PC. Recordings are saved as Wav files.

Configuring freeREC

1. Press **Record** button to activate **freeREC**.
2. Click the **Options** button from the screen to open the **Options** window.



3. You can change the setting according to your own preference. .

Making a Recording

1. Press the REC button to activate and start **freeREC**.
2. Press the Stop Recording Button to stop a recording.
3. Use **freeRec** to play back your recording.

The file is automatically saved under my Documents/IPEVO audio folder.

Pausing and Resuming Recordings

freeREC allows you to pause and resume a recording. For example, if you're recording from online radio, and a commercial comes on, you can pause recording, and then resume when the ads are done.

To pause a recording:

Click the Pause button. The Pause button turns into the Resume button.

To resume a paused recording:

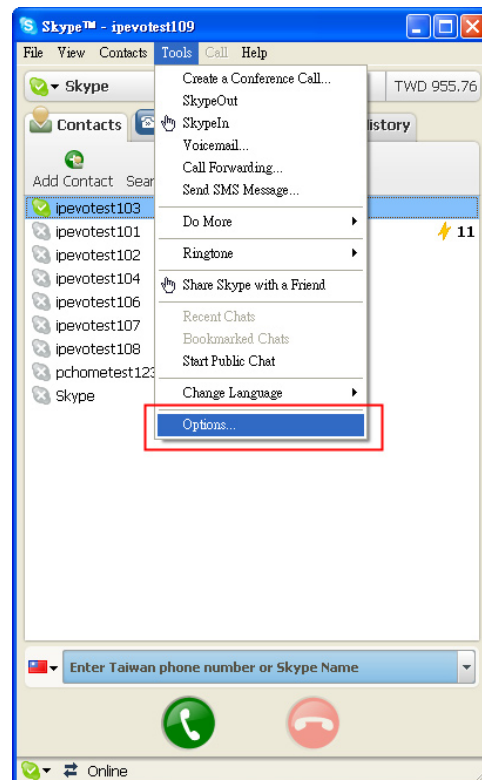
Click the Resume button.

6. FAQ

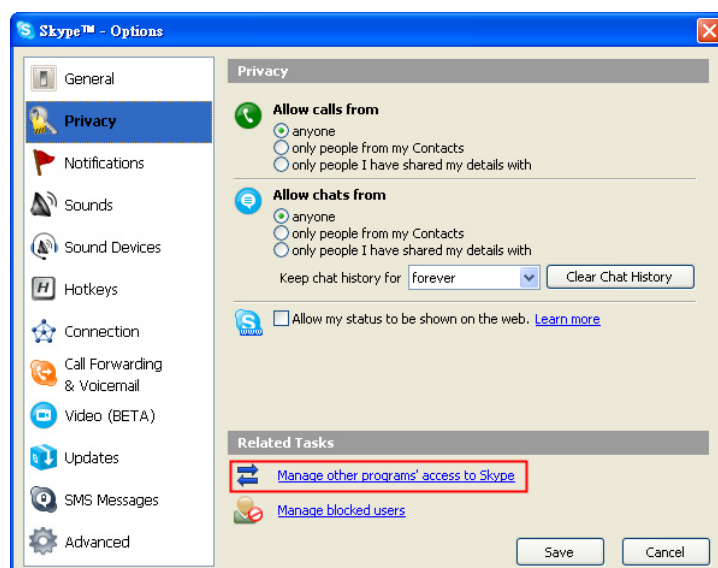
I've accidentally selected 'Do not allow this program to use Skype', how could I change this setting?

The buttons and features for **TRIO** will not work if you select **Do not allow this program to use Skype**. However, you can change the setting via Skype.

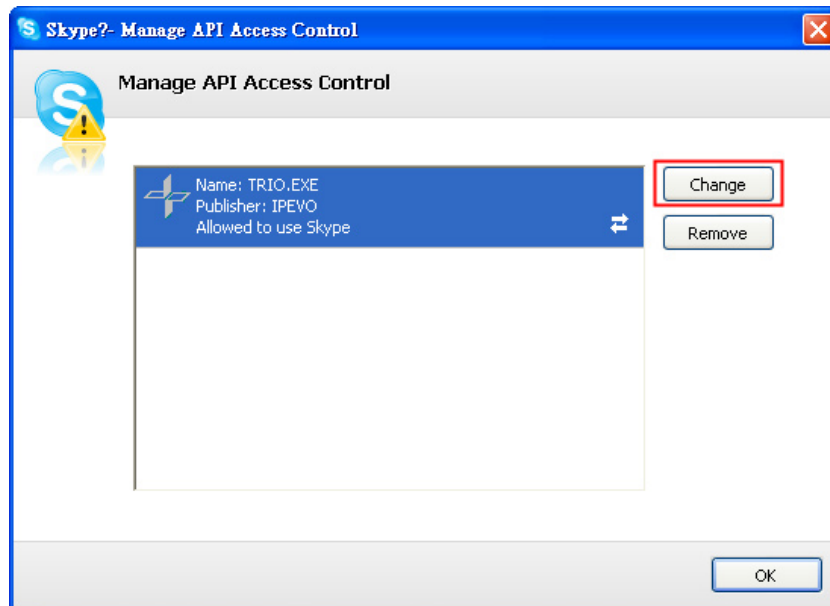
1. Open **Skype**, select **Tools** from the drop-down menu, and then select **Options**.



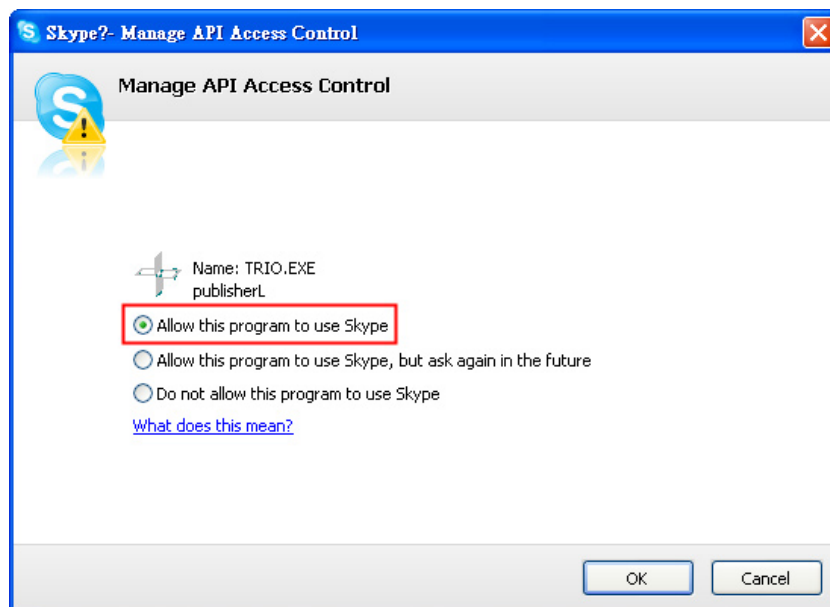
2. Select **Privacy** on the left menu, and click on **Manage other programs to access Skype** at the bottom of the window.



3. Select **TRIO.EXE** in **Manage API Access Control** window, and then click **Change**.



4. In **Manage API Access Control** window, please first select **Allow this program to use Skype** and then click **OK**. The change of setting is then complete.

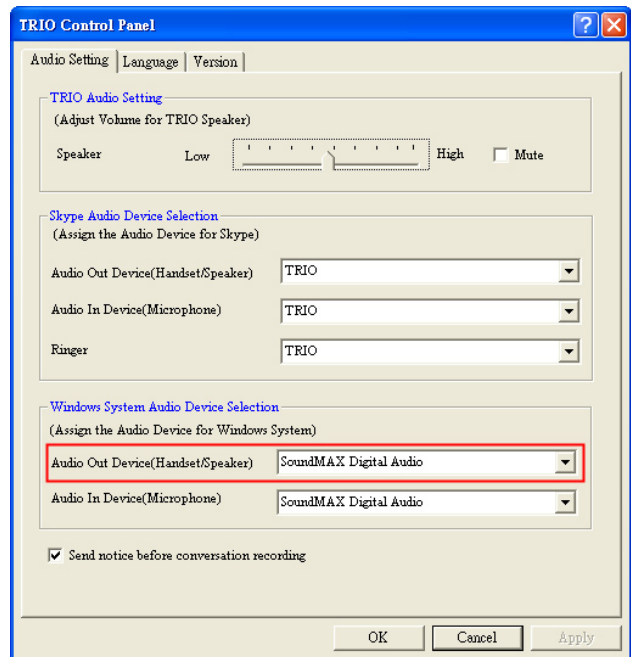


Nothing happens when I press the Skype button on TRIO.

After successful installation of the TRIO driver, TRIO will run automatically as a background service and the TRIO Control Panel will appear on your desktop system tray. If you cannot see the TRIO Control Panel on your desktop system tray, go to **Start | All Programs | IPEVO** and click on **TRIO** to start it manually.

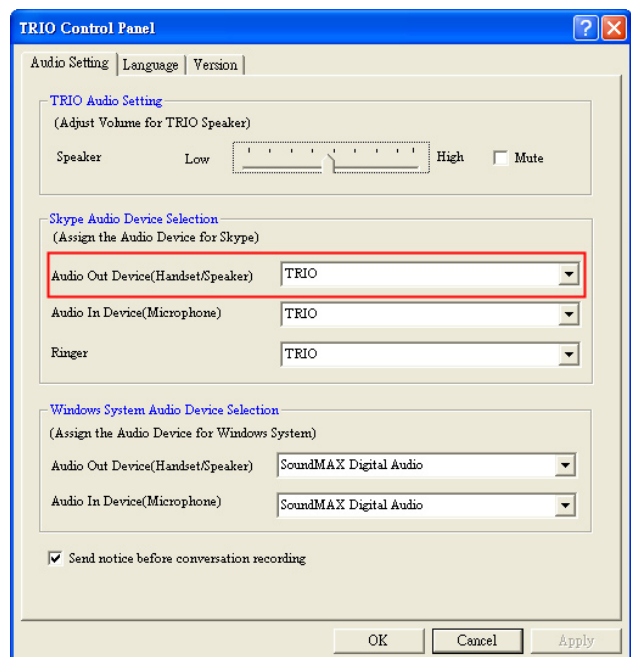
No sound can be delivered through external speakers after I plug in TRIO to the computer.

Please open **TRIO Control Panel**, select **Sound Devices** tab. Under **Windows Default Sound Device**, set your computer sound card as **Audio Out Device** and click **OK**.



No sound comes out of TRIO but only the original speakers after I plug TRIO into the computer.

Please go to **Sound Devices** tab in **TRIO Control Panel**. Then ensure **Audio Out Device** is set to **TRIO** under **Sound Device for Skype** and click **OK**.



Package Contents

- IPEVO TRIO (USB corded)
- Pouch
- Software installation CD includes:
 - TRIO driver (support Skype)
 - recorder software (Compatible with Windows Only)
 - User manual
- Quick Guide
- Extension Cable

014

System Requirement

- Microsoft Windows XP, Mac OS X 10.4 up
- 600 MHz Pentium® II or higher IBM® compatible PC with 128MB free RAM and 40MB free hard disk space
- Broadband internet connection
- Available USB port
- CD-ROM drive

Product Warranty

Intended Use

This device is designed for telephoning within the Internet via Skype™. Any other use is considered unintended use. Unauthorized modifications or reconstruction not described in this manual are not permitted.

Limited Warranty

This limited warranty (hereinafter the Warranty) is valid for the product TRIO (hereinafter the Product). The Warranty is valid only in the country in which the product was originally purchased.

- ◎ The Warranty covers only manufacturing defects, and only insofar as the Product has been used and stored.
- ◎ The Warranty is issued by IPEVO, Inc. to the end purchaser of the Product (hereinafter the Customer).
- ◎ In accordance with the Warranty, the Customer has a sole claim to demand that the Product be repaired/replaced and may not in accordance with the provisions of the Warranty assert further claims against the manufacturer/retailer for indirect loss, including but not limited to loss of data or loss of profit.
- ◎ The Warranty period runs for 12 months from the day on which the Customer originally purchased the Product from IPEVO. Subsequent changes of ownership do not extend the warranty period.
- ◎ The Warranty is valid solely on the condition that the Product is shipped to IPEVO within the warranty period. In the event of a fault or defect in the Product, it must be shipped back to IPEVO. Products are repaired or exchanged at IPEVO's own discretion. The warranty period is not extended for a repaired or replaced Product. Exchanged parts are the property of IPEVO, Inc.
- ◎ The Warranty is valid solely on the condition that the original proof of purchase issued to the original purchaser is presented with the Product.

The Warranty is not valid

- ◎ if the Product has been opened or repair attempted by a person other than IPEVO,
- ◎ if the fault with the Product is due to general wear, incorrect use or storage, including use or storage or faults caused by poor maintenance of the Product,
- ◎ if the fault is the result of the Product not being used for its intended purpose,
- ◎ if the fault is due to external causes such as but not limited to rough handling or misadventure,
- ◎ if the fault is caused by the use of accessories or other peripheral units which are not original accessories intended for use with the Product,
- ◎ if the fault is due to a break in the network or power supply,

In addition to his statutory rights and those set out above, the Customer has no other basis for a claim. Amendments or additions to the Warranty are only valid with the written consent of IPEVO, Inc.

IPEVO and the IPEVO logo are trademarks of PChome Online, Inc., registered in Taiwan.

2860 Zanker Road, Suite #100
San Jose, CA 95134 USA
Service Email: cs@ipevo.com
www.ipevo.com