

ARTDio *Intelligent Communication*

SS-168 / SS-168B

TRUE USB VoIP
(Voice Over Internet Protocol) SPEAKER
with Built-in Microphone

USER'S GUIDE



Please read and understand all safety instructions before use.

INDEX

Index	1	Uninstalling The Software	11
Product Features	2	Trouble Shooting	15
Product Overview	3	Frequently Asked	
Connection	4	Questions	18
Controls	4	Product Specifications	20
Installing the Software	6	Important Safety	
		Instructions	22

PRODUCT FEATURES

The ARTDIO SS-168 VoIP SPEAKER is a full duplex stereo speaker with built-in microphone, DSP (Digital Sound Processing) technology, echo cancellation and noise suppression, for you to listen to music and enjoy conversations through the Internet with a hands free experience.

Designed to support VoIP soft phones such as Skype™ (Installation CD-ROM is included).

- Easy access to Call Button (make/ answer/ disconnect a call).
- Auto Music Pause and Resume with Windows Media Player™ and Winamp™ for incoming/ outgoing calls.

Designed to enhance Stereo Sound Effect provided by C-Media™ USB Sound (Installation CD-ROM is included).

* All tradenames are registered trademarks of their respective companies in the United States and/ or other countries.

PRODUCT OVERVIEW

FRONT VIEW



BACK VIEW



CONNECTION

1. Plug in the USB cable from the speakers to the USB port on your computer.
2. The red LED will light to indicate the power for SS-168 speaker is on.



CONTROLS (please refer to picture [A] on page 5)

(1) Call Indicator

Incoming Call: Green LED will flash for incoming calls, it will light when the call is connected.
 Outgoing Call: Green LED will light when the call is connected.

(2) Call Button (support Skype™ only)

Make a Call: Press to make an outgoing call.
 Answer a Call: Press to answer an incoming call.
 Disconnect a Call: Press to disconnect a call.

(3 & 4) Volume Up & Down

Press and hold "▲" button to increase the volume.
 Press and hold "▼" button to decrease the volume.

(5) 2.5mm Headphone Jack

Connect to headphones with a 2.5mm connector for private conversations.
 Note: a stereo headphone with microphone is included with the package

(6) Power Indicator

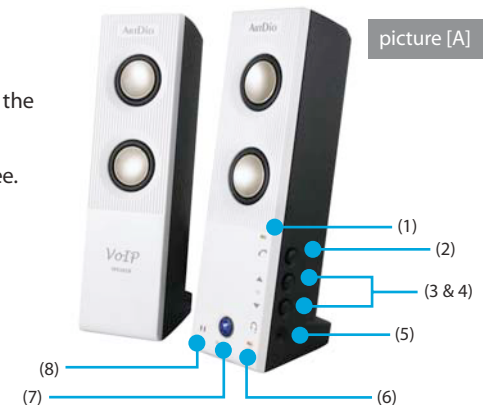
Red LED will light to indicate the power is on.

(7) Microphone Mute

Press to mute the microphone, the blue LED will light.

(8) Built-in Microphone

Talk directly with the built-in microphone on the speaker to enjoy your conversations hands free.

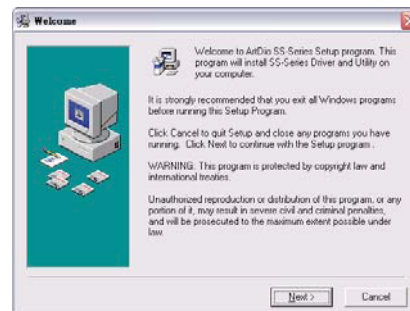


INSTALLING THE SOFTWARE

Note: You must connect the SS-168 speaker to your computer before installing the software.

1. Place the installation CD-ROM into the CD-ROM drive on your computer.
2. The setup program will start automatically; if the auto run does not start, please install manually by double-click on the setup (.exe file) on the CD-ROM drive.
3. Please follow the instructions in the setup program to complete the installation.

INSTALLATION SCREENSHOTS

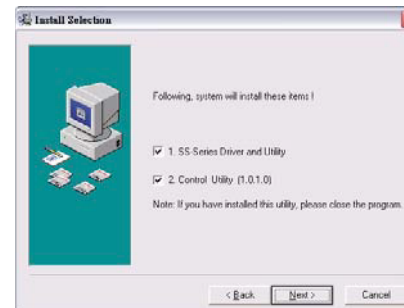


1) Click "Next" to continue setup.



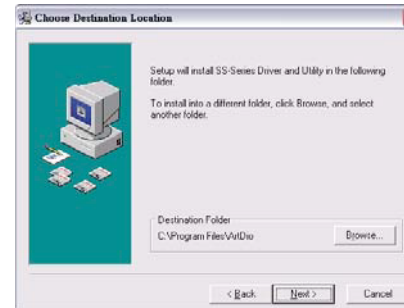
2) Note: Please connect the SS-168 speaker to your computer before installation.

Then click "Next" to continue the setup.



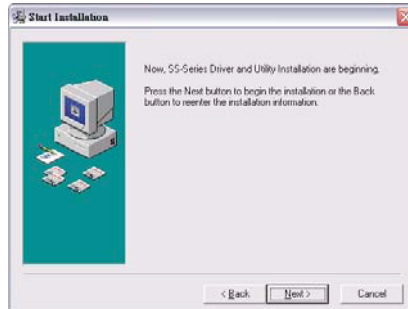
3) Select the items to be installed in your computer, including:
 SS-series Driver and Utility
 Control Utility

Click "Next" to continue the setup.

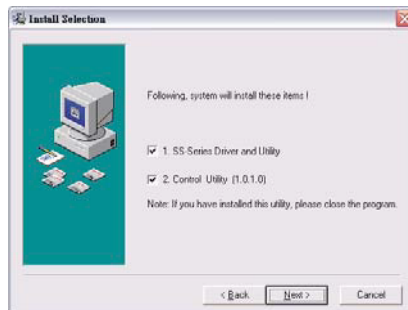


4) Select or create a folder to install your SS-series Driver, or the setup program will install in the following folder C:\Program Files\ArtDio

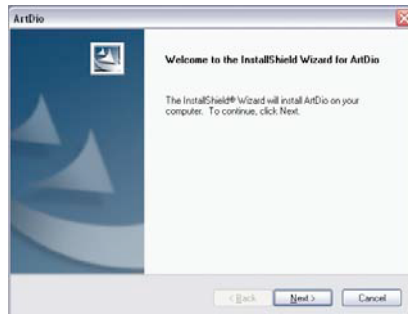
Click "Next" to continue the setup.



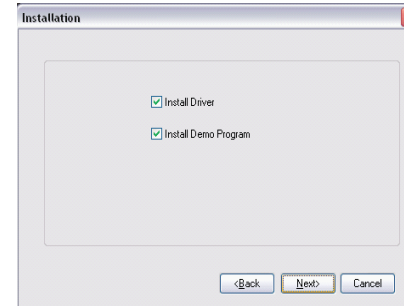
5) Click "Next" to begin installation, or "Back" to re-enter the information.



6) The installation for Control Utility begins, which will take less than 1 minute.



7) Then, continue with the installation for ArtDio driver.
Click "Next" to continue the setup.



8) Select the items to be installed in your computer, including:
 Install ArtDio Driver
 Install Demo Program

Click "Next" to continue the setup.

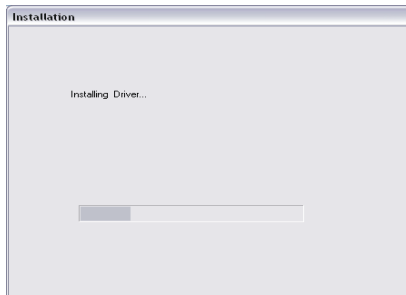


9) Select or create a folder to install ArtDio driver, or the setup program will install in the following folder C:\Program Files\ArtDio

Click "Next" to continue the setup.



10) Click "Next" to continue the setup, or "Back" to change any settings.



11) The Installation for ArtDio Driver begins, which takes about 1-2 minutes.



12) The Installation is completed.

Please restart your computer when the installation is completed.

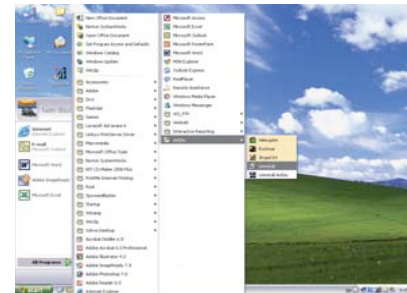
UNINSTALLING THE SOFTWARE

NOTE: Please exit all programs before uninstalling the software.

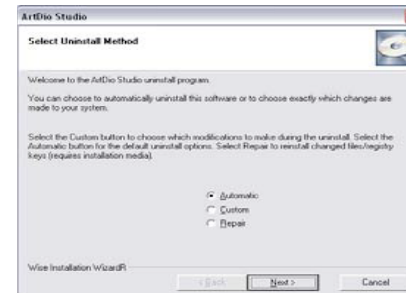
UNINSTALL SS-SERIES DRIVER AND CONTROL UTILITY

Please follow the on-screen instructions to uninstall the software.

UNINSTALLING SCREENSHOTS



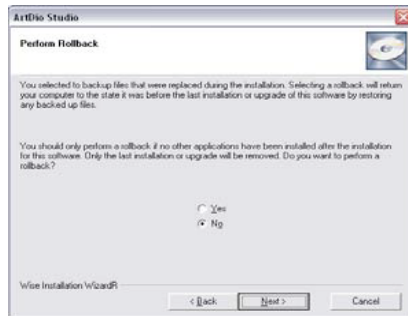
1) Go to Windows Start > All Programs > ArtDio, click on "Uninstall" to uninstall the SS-series Driver and Control Utility.



2) Select uninstall method:

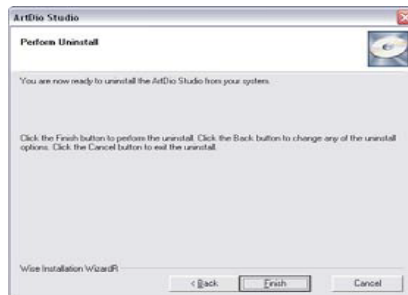
- Automatic: to automatically uninstall the software (default), this option may remain some files in the folder.
- Custom: to choose which modifications to make during the uninstall, then "Select All" to remove all the files and folders.
- Repair: to reinstall changed files/ registry keys.

Click "Next" to continue uninstalling.

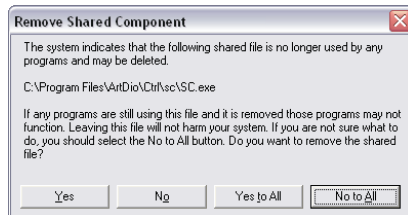


3) Note: Please go to the next step, if this window does not display. Perform rollback will restore the computer to the state it was before the last installation or upgrade of this software by restoring any backed up files.

Select "Yes" to perform rollback, or "No" to continue uninstalling, then click "Next".

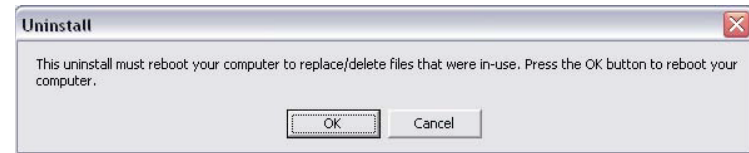


4) Click "Finish" to perform uninstalling, or "Back" to change any settings.



5) "Remove Shared Component" window will display if the installed files are shared by other programs, which ask for permission to delete shared files.

If you are sure, select "Yes" or "Yes to All"; if you are not sure, select "No" or "No to All".



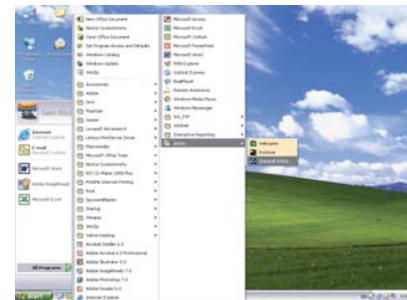
6) The software has been successfully uninstalled.

Please restart your computer after the software is uninstalled.

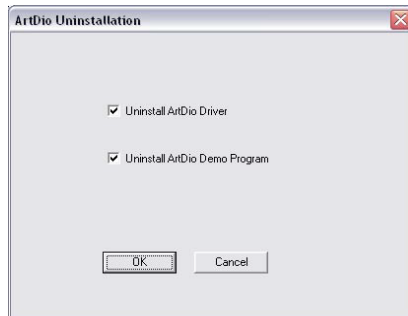
UNINSTALLING ARTDIO DRIVER

Please follow the on-screen instructions to uninstall the software.

UNINSTALLING SCREENSHOTS



1) Go to Windows Start > All Programs > ArtDio, click on "Uninstall ArtDio" to uninstall the ArtDio Driver.



2) Click "OK" to continue uninstalling.



3) The software has been successfully uninstalled.

Please restart your computer after the software is uninstalled.

TROUBLE SHOOTING

No.	Symptom	Possible Problem	Solutions
1	No Power LED (Red) is lit.	The USB cable isn't connected to the USB port on the computer and/ or it is loosened.	Connect the USB cable to the USB port on the computer.
		The USB driver is not functioning.	Download the USB driver from your computer manufacturer's website, or install the software CD-ROM included.
2	No sound is coming from speakers.	The power isn't turned on.	Repeat the step 1 - No power LED is lit.
		The computer does not detect the C-media™ USB Sound as Sounds and Audio Device.	Go to control panel, click on Sounds and Audio Devices, under the Volume Output/ Input Control, choose C-media USB Sound device.
		The volume is set too low.	Press and hold the "▲" button to increase the volume.

TROUBLE SHOOTING (con't)

No.	Symptom	Possible Problem	Solutions	No.	Symptom	Possible Problem	Solutions
3	There is echo sound coming from speakers when the music is playing or while making phone calls.	The software CD- ROM is not installed.	Follow the steps for installing the software.	7	When 2 parties are talking over the internet phone call, the Call Button on the speaker doesn't answer the 3rd party incoming call. (with Skype™)	The media players used is not Windows Media Player™ or Winamp™.	The Auto Music Pause and Resume feature only support Windows Media Player™ or Winamp™ currently.
		Speaker volume is set too high.	Press and hold "▼" button to decrease the volume.				
4	The Call Button on the speaker does not function.	The software CD-ROM is not installed.	Follow the steps for installing the software.	8	Windows stop responding when connecting the speaker to the computer while the music is playing or while making internet phone calls.	The speaker is connected while the music is playing or while making internet phone calls.	Please connect the speaker to the computer while all the programs and applications are close.
		The VoIP soft phone program used is not Skype™.	The Call Button only supports Skype™ currently.				
5	Voice is breaking up while talking through the Internet.	Internet is busy or poor bandwidth quality.	Please consult with your Internet Service Provider.	9	Once you connected the speaker and run Windows Media Player™, it doesn't play the music.	Windows Media Player™ is executed under "skin mode" view.	Please exit and restart Windows Media Player™ again.
		Too far from the speaker.	Be in the range of 2-5 feet from the speaker for best performance.				
6	Music doesn't stop automatically for incoming and/or outgoing calls.	The software CD- ROM is not installed.	Follow the steps for installing the software.				
		The USB connector is loosened.	Reconnect the USB connector to the USB port on the computer.				

FREQUENTLY ASKED QUESTIONS

1. Does the SS-168 VoIP speaker support instant messengers such as MSN Messenger, Yahoo Messenger, QQ and more, other than Skype™?

- ▶ Yes, the SS-168 VoIP speaker works just like any multimedia speaker to support instant messengers as stated above and more, for you to talk to friends and family through the Internet and listen to music.

2. Why there is no power on/ off button on SS-168?

- ▶ The SS-168 VoIP speaker is powered by USB. When the USB cable is fully connected to the USB port as the computer is turned on, the power for the SS-168 VoIP speaker is turned on and the red LED will light.

The SS-168 speaker is powered off at the below stages:

- Before the computer start-up is ready.
- Before the computer enters the operating system and be ready to use.
- When the computer is standing by, hibernated or turned off.
- When the SS-168 VoIP Speaker is unplugged from the computer.

3. There is a 2.5mm headphone jack on the SS-168 speaker, can I connect with any multimedia headphones?

- ▶ The headphone jack on SS-168 speaker is able to connect with any headphones with a 2.5mm connector, which is mostly compatible with cell

phones. Included with the package, is a specially designed 2.5mm stereo headphone with a microphone, for you to use it to listen to music and enjoy your conversations through the Internet.

4. Does the feature of auto music pause and resume for incoming/ outgoing calls support Mac or Linux operating system?

- ▶ No, the software included only supports with Windows operating systems, and does not support Mac or Linux operating systems.

5. Why after uninstalling the software, the SS-168 VoIP speaker still support the function of Auto Music Pause and Resume for incoming/ outgoing call?

- ▶ Possible Problem:
 - a) The users did not exit SS-series program before uninstalling the software, therefore, the uninstalling program only remove the related documents in the system but did not remove the function.
 - Please close and exit the SS-series program before uninstalling the software
 - b) The users did not restart the computer after the software is uninstalled.
 - Please restart the computer after the software is uninstalled.

SPEAKER SPECIFICATIONS

Built-in Speaker	Total Power Output	1W + 1W = 2Watts
	Frequency Response	120HZ-18KHZ
	Driver	1 1/4 inches 4Ω NdFEB Magnet
Built-in Microphone	Coverage	5 M (±60 degree)
	Sensitivity	-40dB
	Frequency Response	50HZ-10KHZ
Digital Sound Processing	Echo Cancellation	50dB
	Noise Suppression	13dB
	Microphone Auto Volume Control	Support
	Full Duplex Satellite	Support
Audio Output	Max Output Power	100mW
Function Keys	Volume Up	Support
	Volume Down	Support
	Microphone Mute	Support
	Call Button	Make/ answer/ disconnect call

Other	Headphone Input Connection	2.5mm Headphone Jack
Connection Type	USB - Audio Support	USB 2.0
Physical Outlook	Dimensions	W1.86" x H 6.75" x D2.75"
	Weight	520mg
Compatible Operating Systems	Windows 2000, Windows XP, Windows 2003	
Accessories Included	Installation Software CD-ROM Stereo Headset with Microphone Quick installation Guide	

SOFTWARE SPECIFICATIONS

- SS-series Driver and Utility
- Control Utility
- C-Media™ USB Sound

IMPORTANT SAFETY INSTRUCTIONS

Please read and understand all safety instructions before use.

1. Read Instructions – All the safety and operating instructions should be read before the appliance is operated.
2. Retain Instructions – The operating instructions should be retained for future reference.
3. Heed Warning – All warnings on the appliance and in the operating instructions should be adhered to.
4. Follow Instructions – All operating and use instructions should be followed.
5. Water and Moisture – The appliance should not be used near water – for example, near a bathtub, washbowl, kitchen sink, laundry tub, in a wet basement, or near a swimming pool, etc.
6. Outdoor Use – Warning: To reduce the risk of fire or electric shock, do not expose this appliance to rain or moisture.
7. Location – The appliance should be installed in a stable location.
8. Heat – The appliance should be situated away from heat sources such as radiators, heat registers, stoves, or other appliances (including amplifiers) that produce heat.
9. Cleaning – The appliance should be cleaned only with a polishing cloth or a soft dry cloth. Never clean with furniture wax, benzene, insecticides or other volatile liquids since they may corrode the cabinet.
10. Object and Liquid Entry – Care should be taken so that objects do not fall and liquids are not spilled into the enclosure through openings.

11. Accessories – Only use attachment accessories specified by ArtDio Co, Inc.
12. Damage Requiring Service – The appliance should be serviced by qualified service personnel when:
 - Objects have fallen, or liquid has been spilled into the appliance.
 - The appliance has been exposed to rain.
 - The appliance does not appear to operate normally or exhibits a marked change in performance.
 - The appliance has been dropped or the enclosure damaged.
13. Servicing – The user should not attempt to service the appliance. Servicing should be referred to qualified service personnel or returned to the dealer or call the ArtDio service line for assistance.



WARNING TO REDUCE THE RISK OF FIRE OR ELECTRIC SHOCK, DO NOT EXPOSE THIS APPLIANCE TO RAIN OR MOISTURE.

CAUTION PILOT LAMP SOLDERED IN PLACE. TO REDUCE THE RISK OF ELECTRIC SHOCK, REFER TO QUALIFIED SERVICE PERSONNEL.



The exclamation point within an equilateral triangle is intended to alert the user to the presence of important operating and maintenance (servicing) instructions in the literature accompanying the appliance.



The lightning flash with arrowhead symbol with an equilateral triangle is intended to alert the user to the presence of uninsulated dangerous voltage within the product's enclosure that may be of sufficient magnitude to constitute a risk of electric shock to persons.