

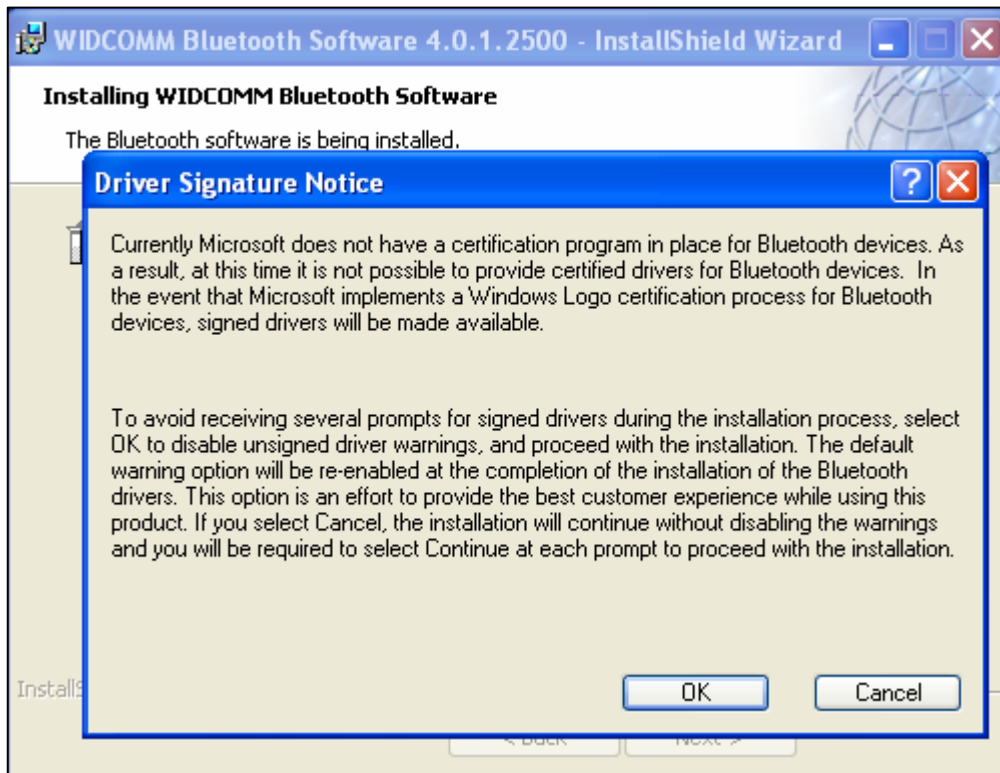
**STEP-BY-STEP GUIDE INSTALLATION  
MOTOROLA BLUETOOTH WIRELESS  
HEADSET FOR SKYPE**



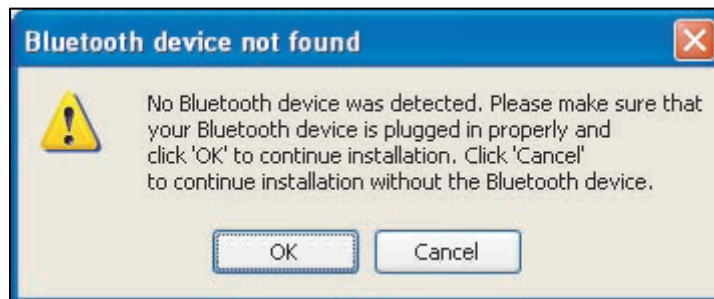
**Project Name:** Guide Installation Bluetooth  
**Document Title:** Guide  
**Revision:** 0.1

**DO NOT insert the Bluetooth PC adapter in an USB port until prompted by the software during application**

1. Stop all running programs and insert the installation CD into the CD-ROM drive. The installation starts automatically and guides you through the installation. If the installation does not start automatically, find the SETUP.exe file on the CD and double click it to start the installation.
2. Welcome to Bluetooth® software windows, click **NEXT** and accept license agreement.
3. Confirm or change software destination location.
4. Click **INSTALL** and installation will start.
5. If this message displays appears during the installation, you must choose an option (OK or CANCEL). In either case, the installation will continue.



- Bluetooth device not found message displays. **DO NOT** respond until you install the adapter.



- Insert adapter into USB port. Click **OK** in Bluetooth device message (see step 6) if installation does not continue.
- Complete the installation and restart your computer.
- Verify Bluetooth adapter is ready to receive and transmit data (led is solid blue). Right click on the **Bluetooth icon**, and select **Start Using Bluetooth**.

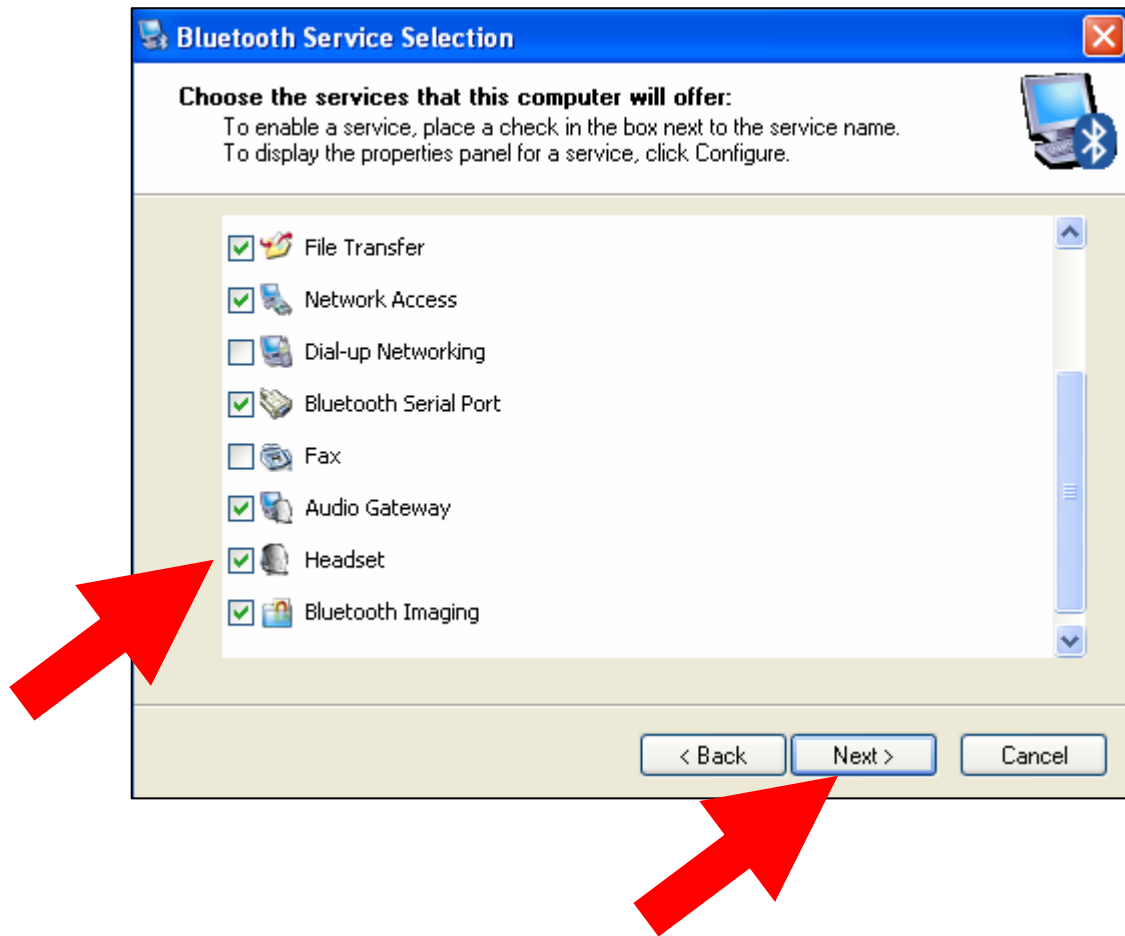


10. Complete the Initial Bluetooth configuration wizard and click **NEXT**.



11. Enter computer information and click **NEXT**. On the Initial Bluetooth configuration wizard, click **NEXT**.

12. Select and configure services. For the correct installation of the Bluetooth wireless Headset the service named **HEADSET** must be selected. Click **NEXT**.

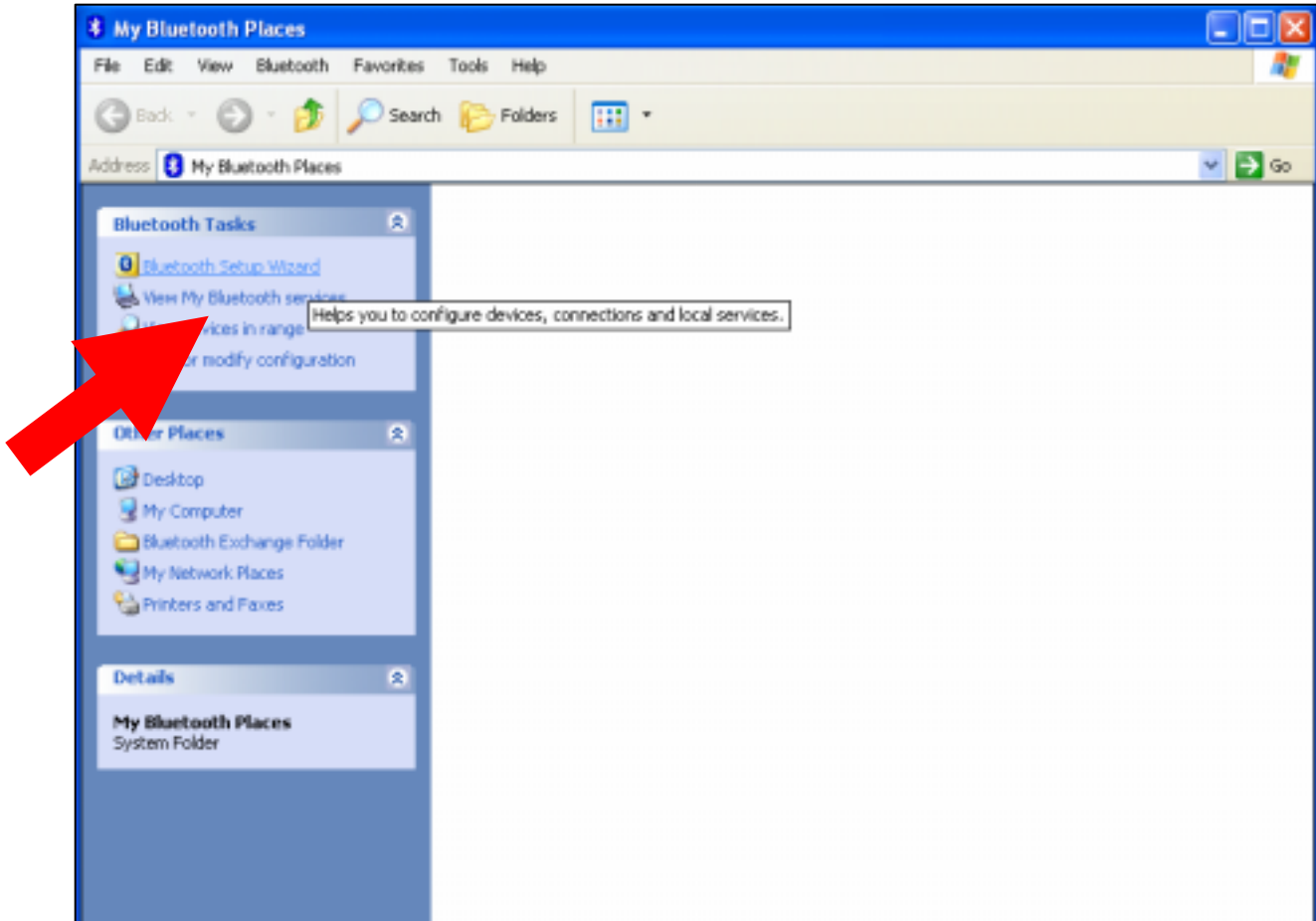


13. To configure another device click **NEXT**, otherwise click **SKIP**. For the correct installation of the Bluetooth wireless Headset you don't need configure another device.

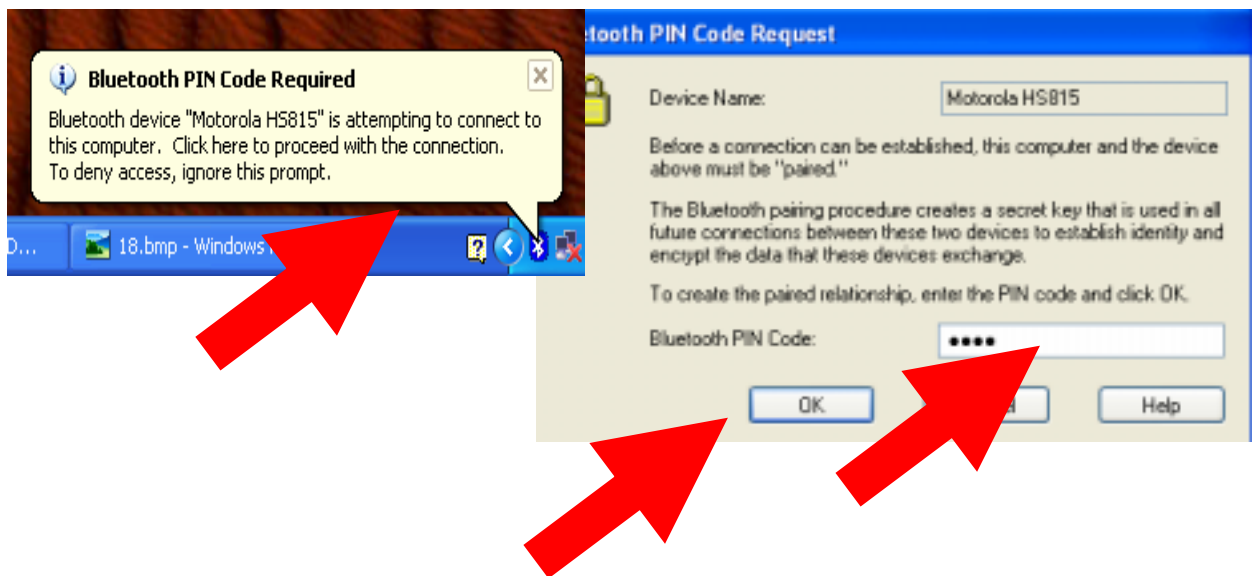


## 14. BONDING WITH YOUR BLUETOOTH DEVICE.

Open Bluetooth Explorer by double clicking **My Bluetooth Places** on your computer desktop. Click **Bluetooth Setup Wizard**. Make sure the Headset is on (press and hold the Call button for 5 seconds until the indicator light turns on and remain steadily lit) and can be found.



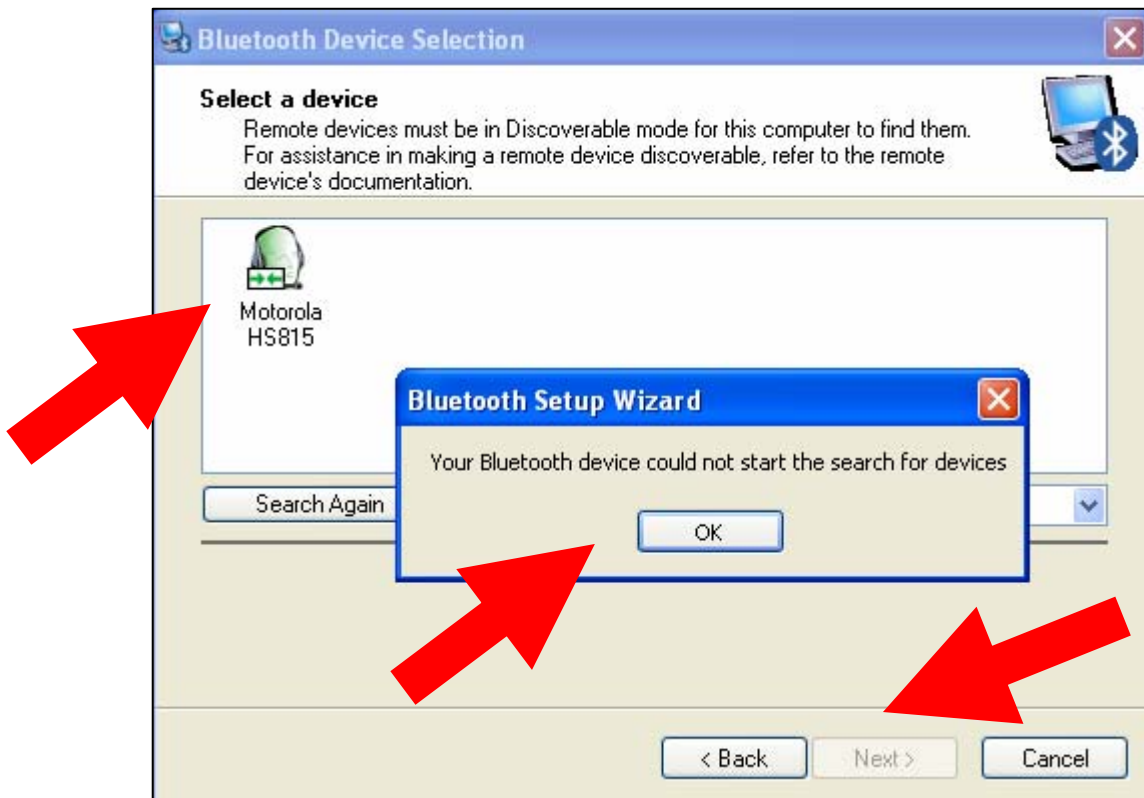
15. When this connect message appears on your computer desktop, click it and enter the Bluetooth PIN code (usually 0000 or 1234) and click OK.



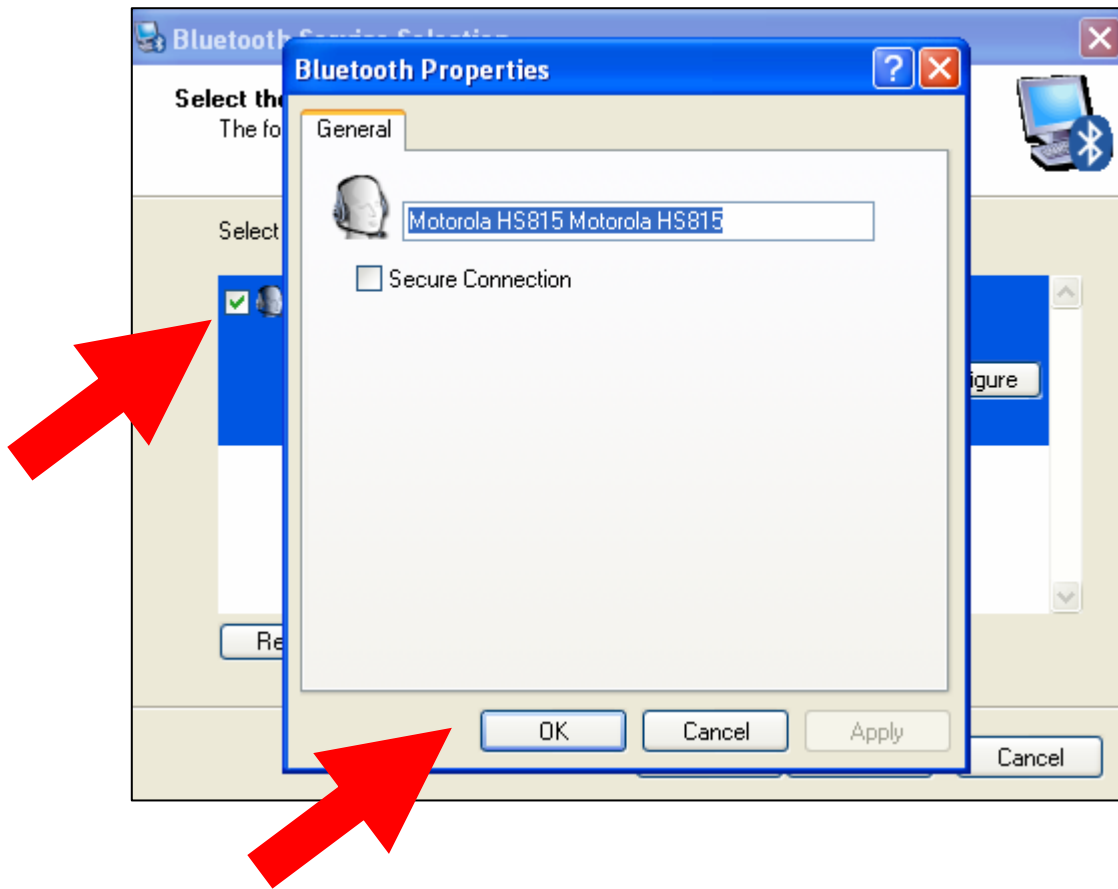
16. On Bluetooth Setup Wizard, select **I want to find a specific Bluetooth device and configure how this computer will use its services**, and click **NEXT**.



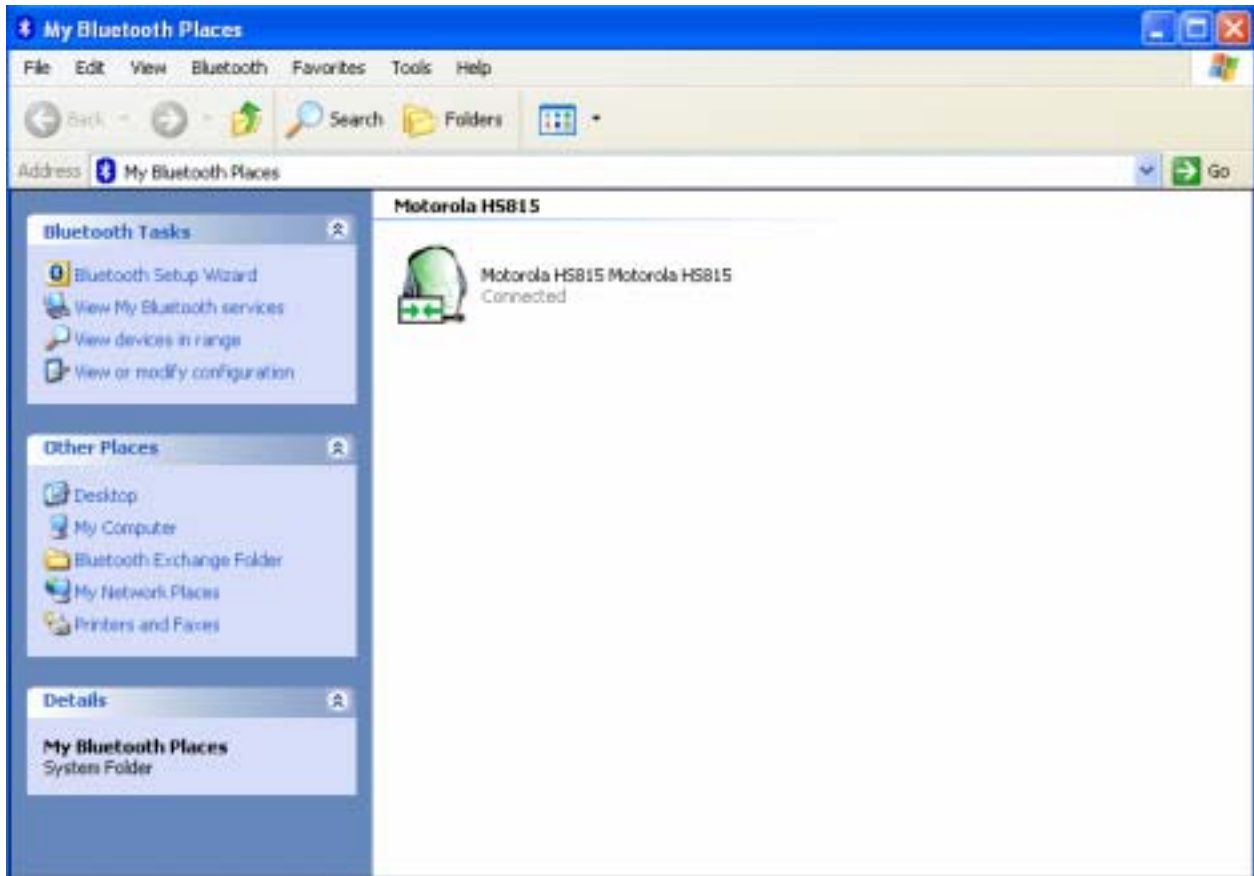
17. If this message appears, click **OK**. Select **Motorola HS815** and click **NEXT**.



18. Check **Motorola HS815**, click **OK** on the Bluetooth properties window and click **FINISH**.



19. This icon indicates that your Headset is connected and ready to use.



**20. HOW TO CONFIGURE SKYPE TO USE BLUETOOTH WIRELESS HEADSET.**

Start **Skype** and select **Tools menu**, click **Options** and then select **Sound Devices**. In the Audio In, Audio Out and Ringing device lists select **Bluetooth Audio** and click **SAVE**.

